

**GS1 UK conference**

**09 April 2019**

***Implementing the NHS Long Term Plan***

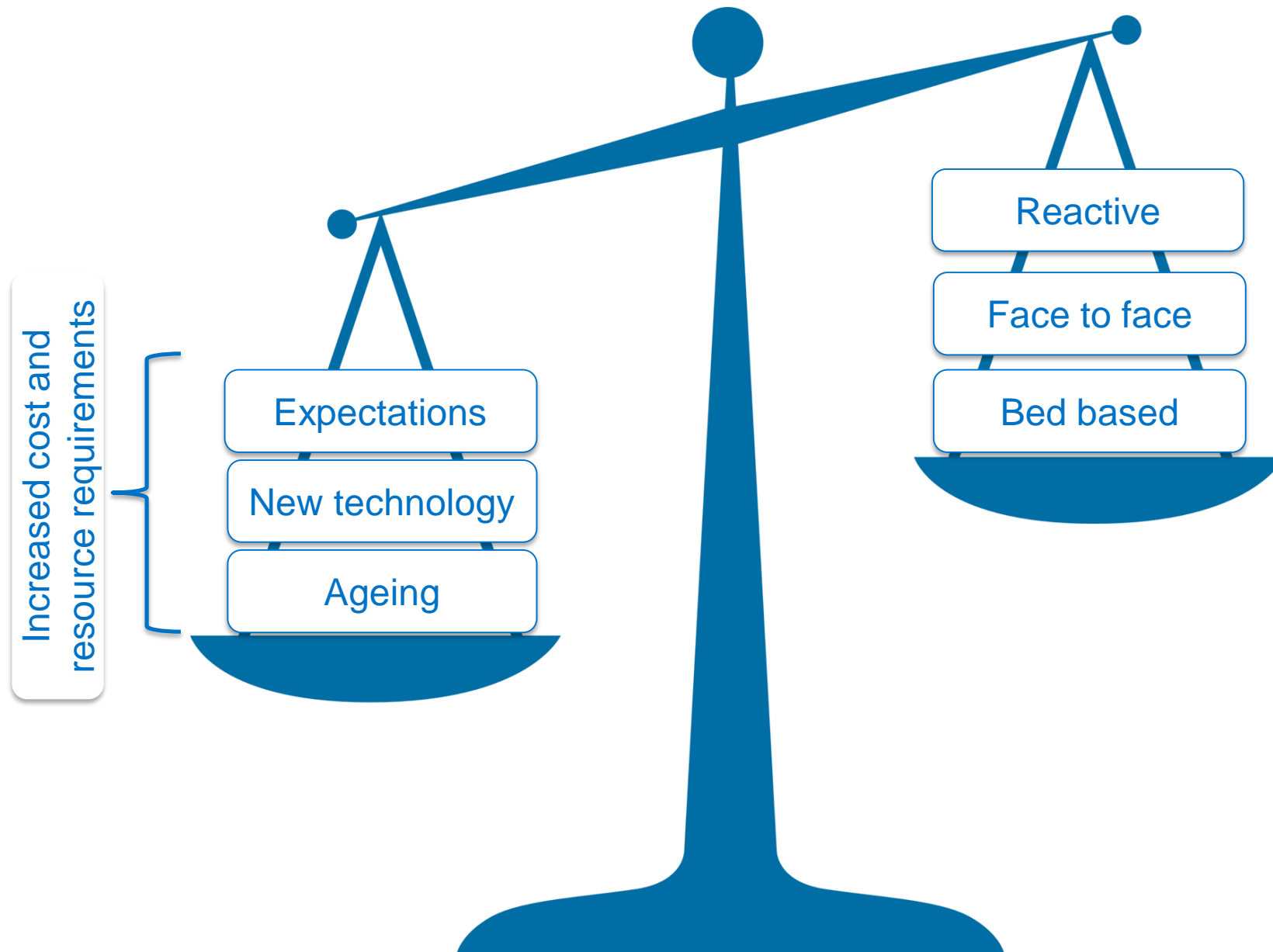
**Matthew Swindells**

**Deputy Chief Executive  
NHS England**

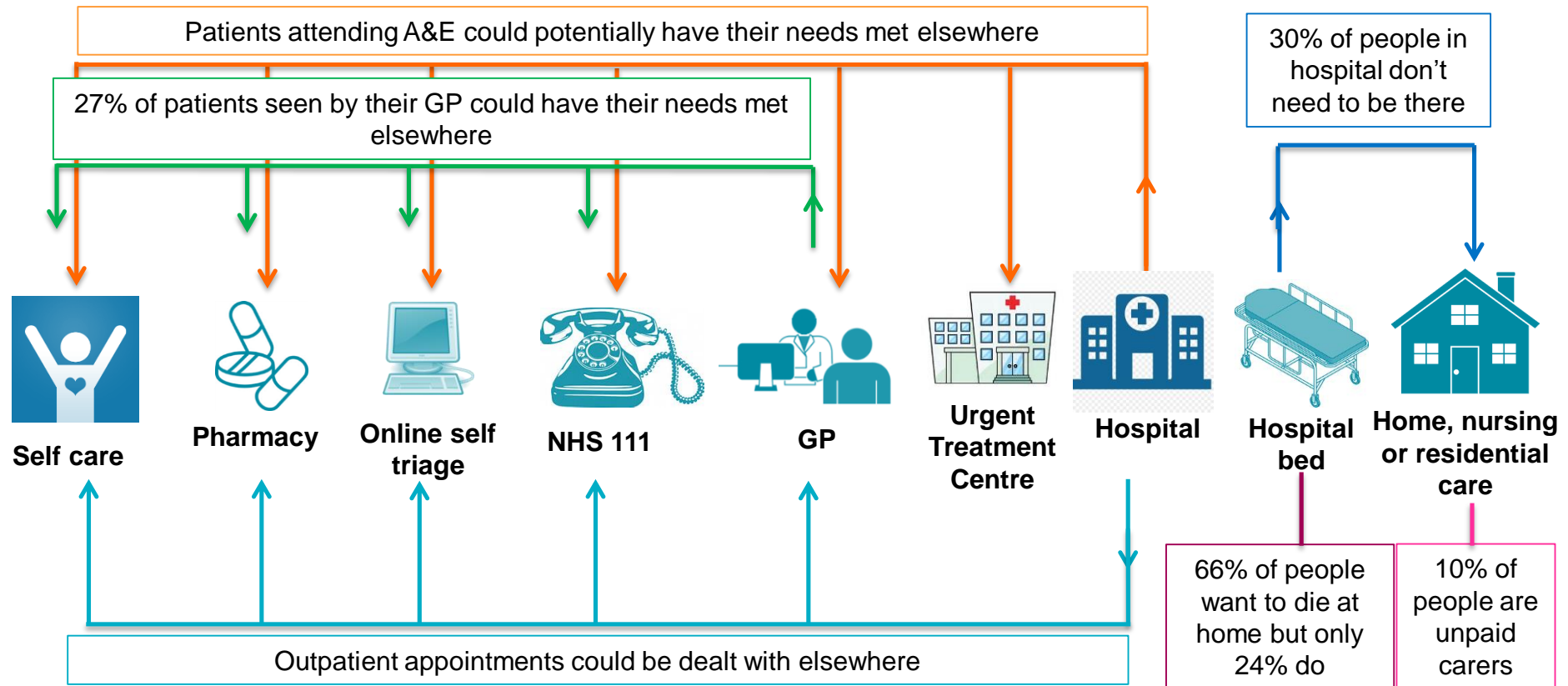


**@mswindells**

# Global challenges vs. current model



# Redesigning Service Delivery



In the Long Term Plan we said we would:

- Become Digital First for most care
- Provide a 24/7 integrated Urgent Care Service, accessible online or via NHS 111
- Reduce outpatient appointments by a third
- Free up over one million hospital bed days through enhanced community care
- Develop Integrated Care Systems, Place and Primary Care Networks of local GP practices and community teams

# An ageing population

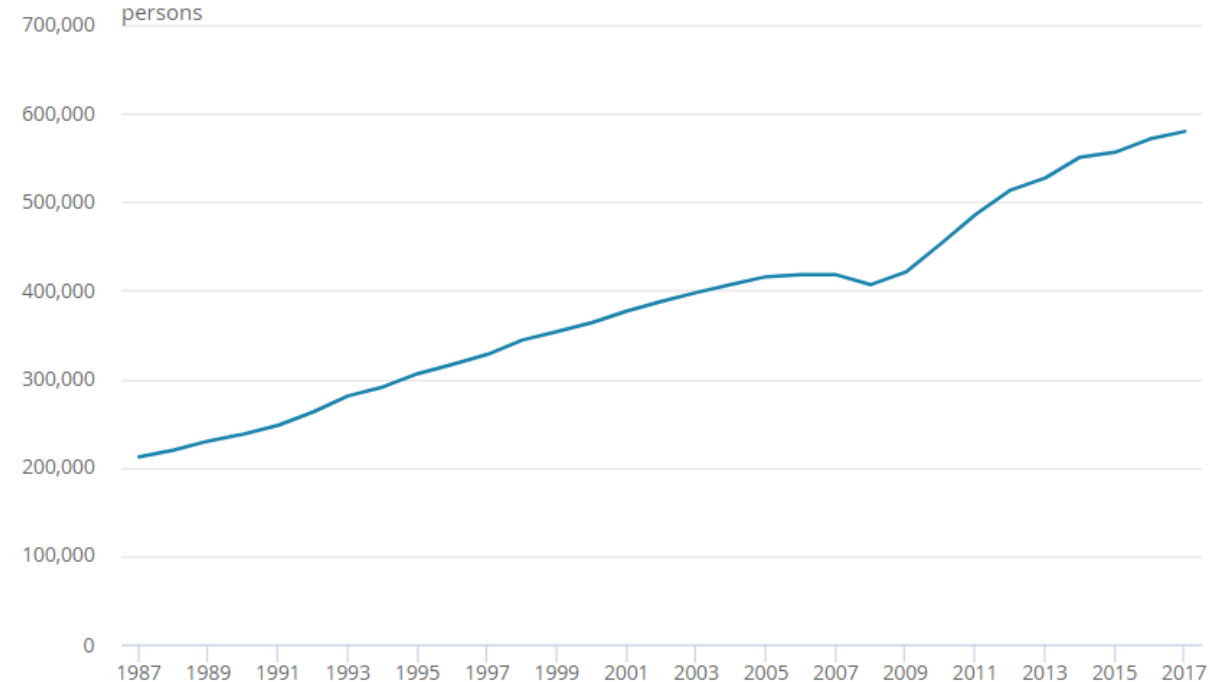
- “The first person to live to 150 has already been born” – *David Sinclair, co-director of Harvard Medical School lab on aging, 2015*
- Centenarians are the fastest growing age group in the UK (ONS)

- At the moment **2 in 10,000** people are aged 100+ (15,000)

In 20 years' time, **2 in 1,000** people will be aged 100+ (150,000)

## Number of people aged 90 years and over

UK, 1987 to 2017



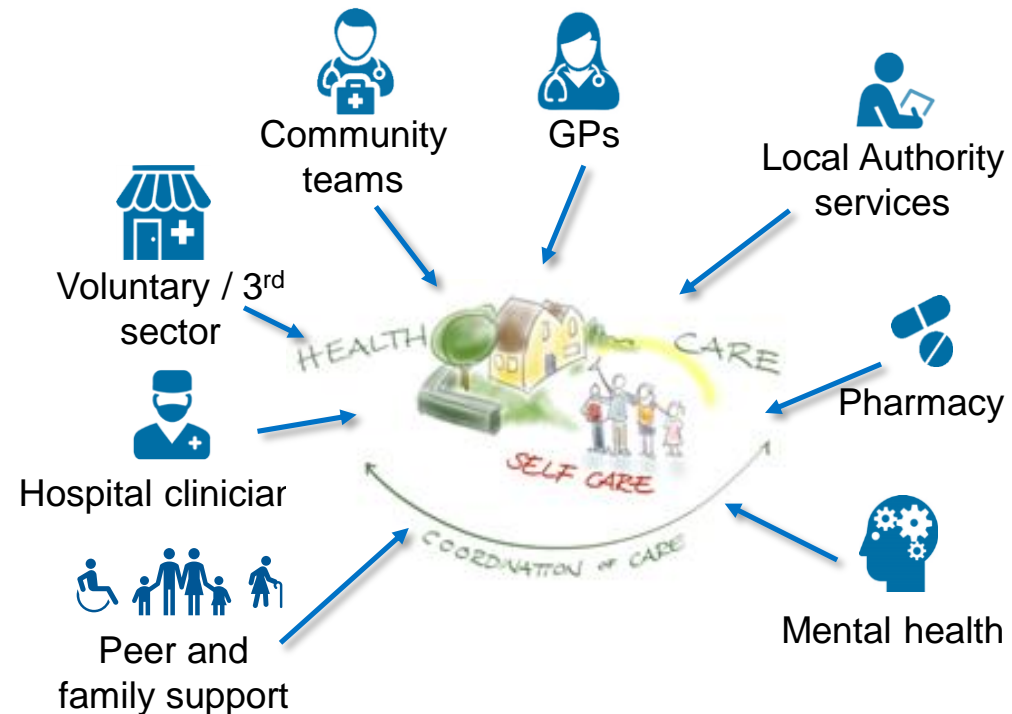
Source: Office for National Statistics, National Records of Scotland, Northern Ireland Statistics and Research Agency

# A grand challenge for individuals, families and society

## Efficient and effective care:

- Reduce unwarranted variation
- Reduce inappropriate admissions, procedures and appointments
- Pathway redesign
- Flow management
- Workforce

## Right care, right people, right place



# Commitment to data capture

Our tech strategy, informed by Scan4Safety:

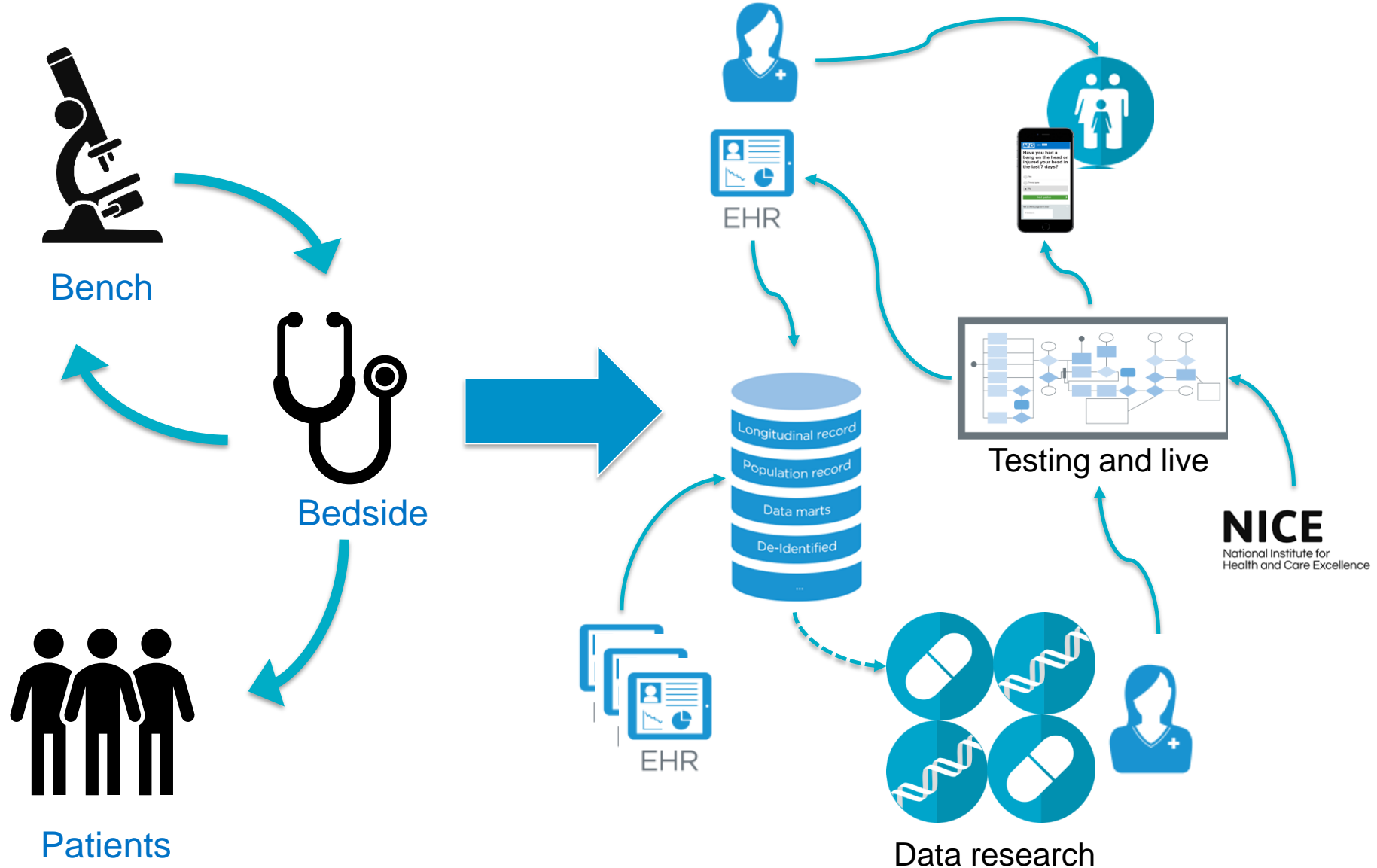
- GS1 comply with government open standards
- Learning from roll-out pilots
- 12 month payback for local organisations



The Long Term Plan committed to:

- Use tools to capture data as a by-product of care
- By 2024, all secondary care providers in England will be fully digitised. Data will be captured, stored and transmitted electronically

# The next generation of research



# Suzie is recovering from cardiac surgery

