

# Maximising efficiency and accuracy: the benefits of using IMS' for point of care scanning

## **Phillip Lapish**

Supply chain and GS1 manager – procurement  
East Suffolk & North Essex Foundation Trust

#bettercarecostsless



# Maximising Efficiency and Accuracy

*The benefits of using inventory management systems for point of care scanning*

**Phillip Lapish**

Supply Chain & GS1 Manager



East Suffolk and North Essex  
NHS Foundation Trust

ORACLE®

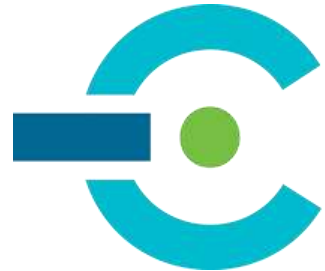


Inventory

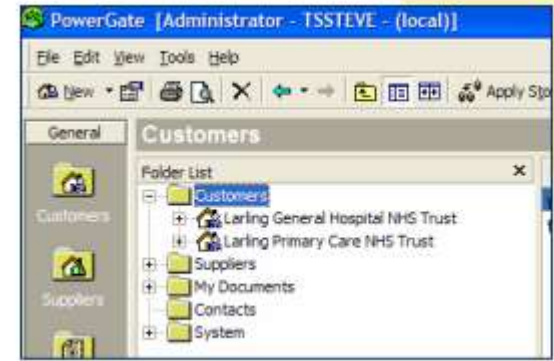
**GHX**. NEXUS

**GHX**. EXCHANGE 

**Epic**



Integra  
*Centros*



**NHS**  
Supply Chain

Why use an inventory solution  
for point of care scanning?

# WHY DO WE DOCUMENT?

- **Clinical**
  - LEGAL REQUIREMENT Under Medical device regulations
  - Needed in the event of product recalls
  - Improves patient safety – reduces risk of using expired items
  - Can inform clinical decision making
  - Important to inform future treatment decisions
- **Non-Clinical**
  - Can help automate ordering
  - Provides demand data
  - Can help reduce waste by tracking expiry dates

## List of all items matching a keyword search for “MESH”

Material	ManufacturerCode	Description
184937_5152-100	5152-100	Biologic mesh - 15x20x1.00 x1 - NON RETURNABLE
184938_5152-150	5152-150	Biologic mesh - 15 x 20 x 1.5mm - NON RETURNABLE
10149877_GKFR2025E	GKFR2025E	Synthetic Bioabsorbable Mesh - Intraperitoneal 20cm x 25cm rectangle composite
3212105_IP113316F1	IP113316F1	Parastomal mesh - IPST -R PVDF VISIBLE 3cm x 16cm x 16cm preformed slit
451318_SYM2520F	SYM2520F	Incisional hernia mesh - Composite mesh with thread/25 20 cm box of 1 medium
3212104_IP103316F1	IP103316F1	Parastomal mesh - IPST -R PVDF 3cm x 16cm x 16cm preformed slit
3212101_IP082415F1	IP082415F1	Parastomal mesh - IPST PVDF VISIBLE 15cm x 15cm x 2cm x 4cm cuff
451315_SYM2015F	SYM2015F	Incisional hernia mesh - Composite mesh with thread/20 15 cm box of 1 medium
3212114_PV094560F1	PV094560F1	Intraperitoneal mesh - CICAT PVDF 45cm x 60cm transverse repair
1662432_SYM15F	SYM15F	Incisional hernia mesh - Composite Mesh with Thread 15cm diameter
3212112_PV093045F1	PV093045F1	Intraperitoneal mesh - CICAT PVDF 30cm x 45cm longitudinal repair
1330966_SYM12F	SYM12F	Incisional hernia mesh - Composite mesh with thread /12 cm diameter box of 1 small
466941_VM95	VM95	VICRYL MESH 26.5X34CM
1785274_LPG1510AR	LPG1510AR	Contour mesh (preformed mesh) - Paritex lap progrip right anatomical 15 x 10 cm
1785275_LPG1510AL	LPG1510AL	Contour mesh (preformed mesh) - Paritex lap progrip left anatomical 15 x 10 cm
10570366_PV360423F1	PV360423F1	Dynamesh PR Soft
383240_LPG1510	LPG1510	Mesh flat sheet standard - 10x15cm lp progrip flatsheet meshx1
10346283_PV360423F1	PV360423F1	DYNA MESH PPR SOFT : 02104 X23CM
427853_PML1	PML1	PROLENE MESH 30X30CM
10309776_TMP3008G	TMP3008G	PROGRIP MESH SUTURELINE SUPPORT TMP3008G
10309365_TMP2008G	TMP2008G	PROGRIP MESH SUTURELINE SUPPORT TMP2008G
1235121_TECR1515	TECR1515	Standard flat mesh heavy weight - TECR1515 Parietex polyester rigid bi-dimensional mesh 15 x 15cm
431333_PVM2M3	PVM2M3	VYPRO II MESH UND/VIO 15X15CM
1235122_TECR3030	TECR3030	Standard flat mesh heavy weight - TECR3030 Parietex polyester rigid bi-dimensional mesh 30 x 30cm
452967_TEM1515G	TEM1515G	Contour mesh (preformed mesh) - Parietex progrip tem/pla 15x15cm
1785087_1001014-00	1001014-00	Standard flat mesh medium weight - 25.4 x 35.5cm Prolite knitted monofilament polypropylene mesh
4619303_DXT1510AL	DXT1510AL	Synthetic Shaped Mesh - Anatomical 15x10cm Left
4619304_DXT1510AR	DXT1510AR	Synthetic Shaped Mesh - Anatomical 15x10cm Right
4619305_DXT1612AL	DXT1612AL	Synthetic Shaped Mesh - Anatomical 16x12cm Left
4619306_DXT1612AR	DXT1612AR	Synthetic Shaped Mesh - Anatomical 16x12cm Right
10308424_TMP1008G	TMP1008G	PROGRIP MESH SUTURELINE SUPPORT TMP1008G
452966_TEM1509G	TEM1509G	Contour mesh (preformed mesh) - PARIETEX PROGRIP TEM/PLA 15X9CM X1
1235118_TECR1510	TECR1510	Standard flat mesh heavy weight - TECR1510 Parietex polyester rigid bi-dimensional mesh 15 x 10cm
427858_PMM3	PMM3	PROLENE MESH 15X15CM
427860_PMN3	PMN3	PROLENE MESH 15X10CM


Embozene™

COLOR-ADVANCED MICROSPHERES

500µm  
2mL

Microspheres for Embolization

Microsferes pentru embolizare, Microspheres d'embolisation,  
Mikrosfere za embolizaciju, Mikrosfere za embolizaciju,  
Mikrosferen bi embolizatsion, Mikrosfere bi embolizatsion,  
Microsfères para Embolizatsiõ, Mikrosfèry k embolizatsii,  
Embolizáló mikroszférák, Mikrosféry k embolizácii, Mikrosfery  
za embolizaciju, Mikrosferer for embolisering, Embolisasyon Mikrosfereleri,  
Embolizatsionmikropallot, Microsfere pentru embolizare, Микросферы  
для эмболизации, Mikrosféry na embolizáciu


 Contents (1)

01-0301-05002-07

GTIN 08714729943167

REF Catalog No. 15020-S1

Use By  
2025-12-13

STERILE  Sterilized using  
steam (or dry) heat.

LOT 31016390



01 08714729943167 172512131001010390 0 S1



WHAT SHOULD WE CAPTURE?

WHAT COUNTS AS AN IMPLANT?

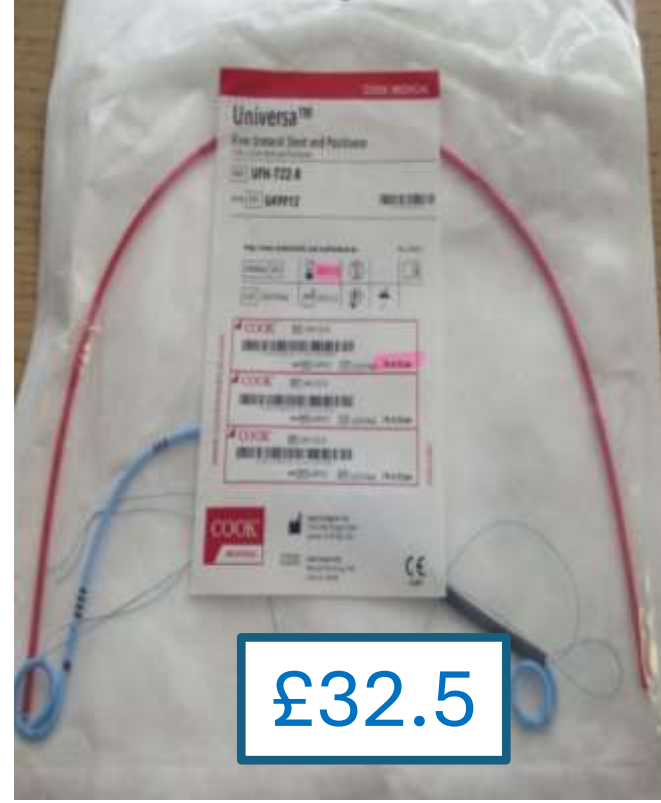
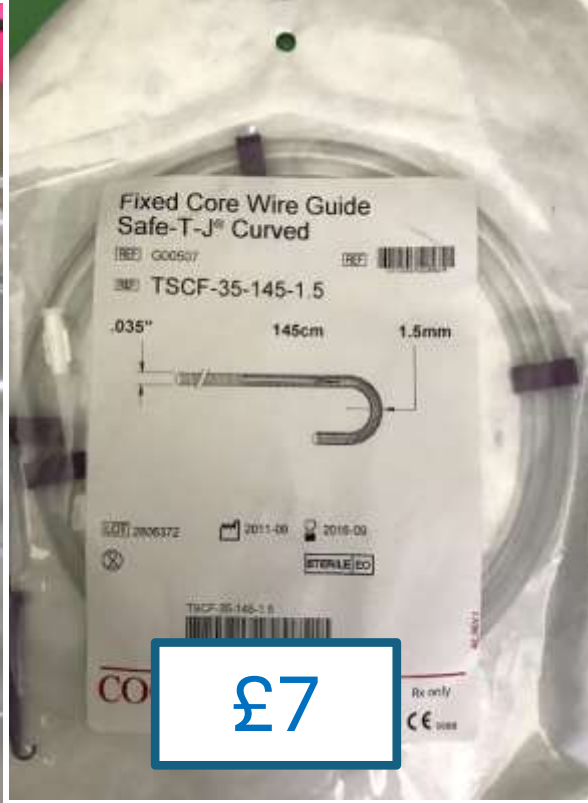
IS THAT ITEM A COST RISK?

ENDOSCOPIC STONE  
EXTRACTOR

GUIDEWIRE

URETERAL ACCESS  
SHEATH

URETERAL  
DIVERSION STENT



CONSUMABLE

CONSUMABLE

CONSUMABLE

IMPLANT

# Main Theatres – Suite Colchester Hospital

5 Theatres – in 3 months recorded 20400 products

Urology

Gynae

General Surgery

Vascular

Robotics

ENT

Plastics

# WHAT DOES MANUAL DATA ENTRY LOOK LIKE?

Data submitted to NJR		
Manufacturer	ComponentDesc	CatalogueNo
Lima	UNI FL.FIX TIB PRC MRT/LLT SZ5 5842-05-02	1439909
Lima	UNI FL.FIX TIB PRC MRT/LLT SZ6 5842-06-02	1439940
Lima	UNI FLEX FEM PRC MLT/LRT SZ C 5842-13-01	5842-13-01
Lima	UNI FLEX FEM PRC MLT/LRT SZ E 5842-15-01	5842-15-01
Lima	Bone screw 6.5 30mm 842015030	842015030
Lima	BONE SCREW Ø6.5 H.30MM. TI6AL4V 8420.15.030	8420.15.030
Lima	BONE SCREW Ø6.5 H.20MM. TI6AL4V 8420.15.010	8420.15.010
Lima	BONE SCREW Ø6.5 H.25MM. TI6AL4V 842015020	842015020
Lima	BONE SCREW Ø6.5 H.35MM. TI6AL4V 8420.15.040	8420.15.040
Lima	BONE SCREW Ø6.5 H.40MM. TI6AL4V 842015050	842015050
Lima	BONE SCREW Ø6.5 H.45MM. TI6AL4V 842015060	842015060
Lima	BONE SCREW Ø6.5 H.50MM. TI6AL4V 8420.15.070	8420.15.070

# SNAPSHOT OF CONSUMPTION RECORDED IN THE SYSTEM

05/04/2025 12:55:22	[D6240826] right reverse total shoulder replacement	Theatre19	2834788_A10012 Shoulder implant accessories - GPS IMPLANT KIT V2				Unable to find item in location	<a href="#">Amend Stock</a>
05/04/2025 12:34:26	[D1038402] orif right clavicle	Theatre 11	201701_628030S 628030S - Superior Plate - Decreased Curvature Variax Clavicle 10 Hole / Right				Unable to find item in location	<a href="#">Amend Stock</a>
05/04/2025 11:42:53	[D0926065] left DHS	Theatre 15	214198_702462S 702462S - Asnis Iii 3.2 Threaded Guide Wire 300mm Sterile				Unable to find item in location	<a href="#">Amend Stock</a>
04/04/2025 17:09:50	[D6252055] Left ankle ORIF	Theatre25	10393031_P20- Headed - Mini 4.0 X 34mm Screw Short 140-034S Thread				Unable to find item in Store Room	<a href="#">Amend Stock</a>
04/04/2025 17:03:15	[D5071885] exploration and repair of left inguinal hernia	Theatre 09	1352171_W295H PROLENE BLU 75CM M3 USP2/0 S/A MH-1				Unable to find item in Store Room	<a href="#">Amend Stock</a>
04/04/2025 16:44:55	[D6252055] Left ankle ORIF	Theatre25	10393031_P20- Headed - Mini 4.0 X 34mm Screw Short 140-034S Thread				Unable to find item in Store Room	<a href="#">Amend Stock</a>
04/04/2025 16:27:21	[D6252055] Left ankle ORIF	Theatre25	10393326_P20- Headed - Mini 4.0 X 24mm Screw Short 140-024S Thread				Unable to find item in Store Room	<a href="#">Amend Stock</a>
04/04/2025 16:21:29	[D6252055] Left ankle ORIF	Theatre25	10375923_P53- Straight foot Plate - Fibular 3 Hole 201-0003				Unable to find item in Store Room	<a href="#">Amend Stock</a>
04/04/2025 15:48:01	[D0613650] open repair left groin hernia	Theatre 09	2606848_66000713 OPSITE POST OP 20X10CM CTN 20				Unable to find item in Store Room	<a href="#">Amend Stock</a>
04/04/2025 15:14:14	[D0926065] Left Dhs	Theatre 15	223358_71340007 ACC 2.0MM COCR CABLE W/CLAMP [Batch: 24GSM0061]	24GSM0061	09/08/2034		Unable to find item in location	<a href="#">Amend Stock</a>

# NOT ALL BARCODES ARE CREATED EQUALLY



# HOW CAN WE MAKE IT EASIER?



MANUFACTURERS  
STOP DOING  
THIS!



# HOW CAN WE MAKE IT EASIER?

DO THIS INSTEAD!



Thank you for listening!

