



GS1 standards adoption supported by NHS Shared Business Services

James Thirkill

Director of business development
NHS Shared Business Services



#bettercarecostsless

Integrating purchasing and finance systems across an ICS to boost productivity

James Thirkill

Director of Business Development
NHS Shared Business Services

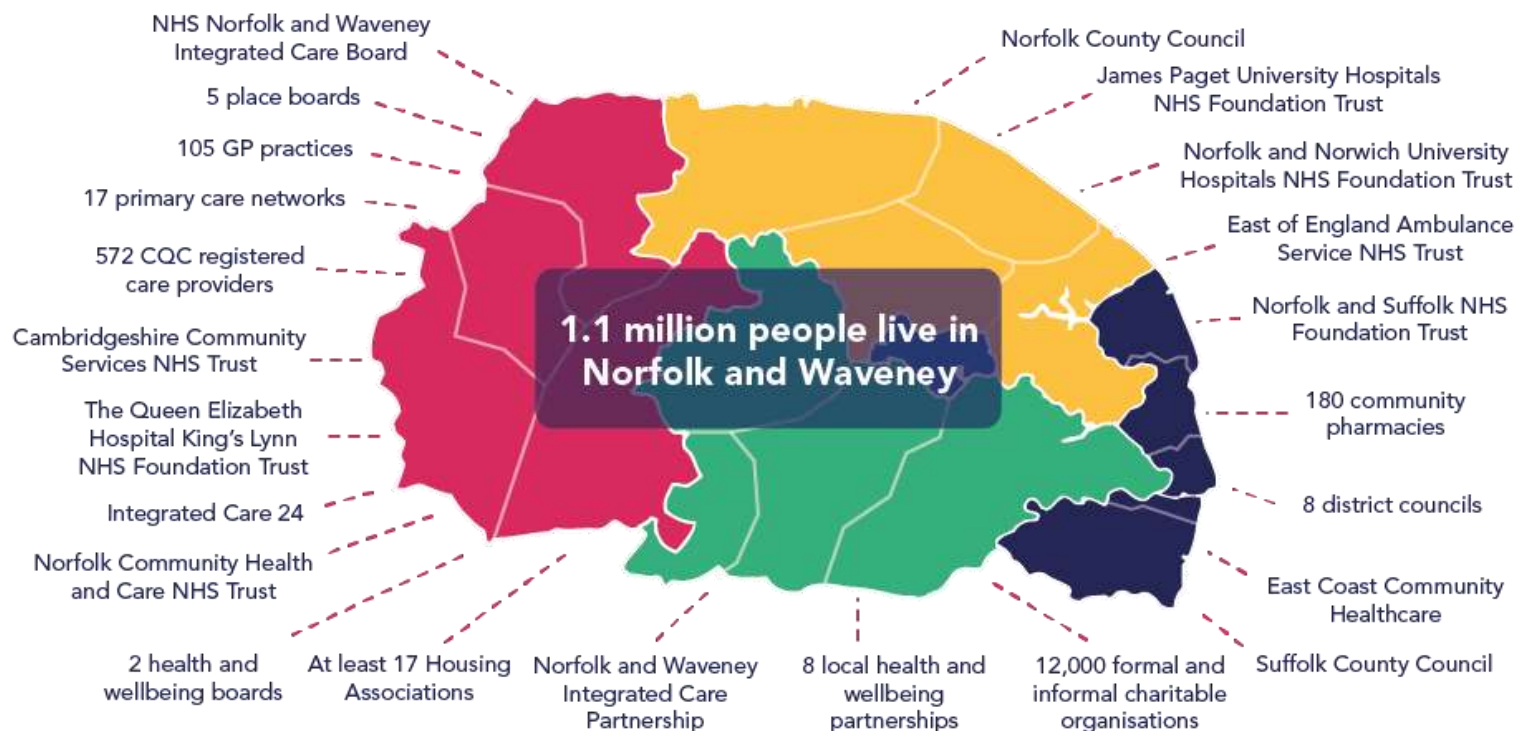


**Request a
brochure**



**Read the full case
study**

Norfolk & Waveney Integrated Care System



Scope:

- 3 x Acute Providers
- 1 x Community Trust
- 1 x Mental Health Trust

Challenges to address



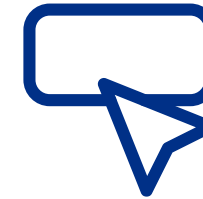
Processes

- Inconsistent
- End users sourcing
- Contract leakage



Users

- 90% users non-Finance
- Too many steps for basic requisitioning
- Local processes



ICS Systems

- Multiple aging systems and providers
- Lack of visibility
- Lack of interoperability

Manual processes

Low levels of automation

Duplication

Analogue to Digital transformation

Requirements:

- A single, integrated financial ledger and enhanced purchase-to-pay (EP2P) platform for the entire ICS
- One Product Information Management (PIM) system
- Improved end user experience and financial controls
- Leverage automation
- Enable collaboration and transformation

Digitalisation pathway

- Finance and Accounting with NHS SBS
- Procurement with incumbent solutions

October 22

ICS consolidated catalogue

October 23

EP2P live

IMS live

July 2024

2022

2023

2024

ICS EP2P requirements

Sept 2024

EP2P roll out

Solution co-developed

Inventory

Governance – Joint SDG and Programme Board

Implementing for success



Solution design

- Clear TOM
- Standard processes
- SFI's



Data

- Catalogue with compliant data
- Integration ICS and Trust level
- Suppliers configured for automation



Change

- Persona based
- Clear communications
- Tailored training



Support

- On site
- On demand remote
- Interactive collateral

Robust governance

Product Information Management



Shared Business Services



Supplier master catalogues, including list price



NHS SBS Layer

ICS Workplans:
aligned contracts



N&W ICS layer



Trust catalogues (with Trust pricing) & ICS shared catalogues



Procure

Help

ADD ITEMS

PUNCHOUT SESSIONS



My Lists

Actions

- Finance
- My team
- Tea Supplies
- Ultrasound

Facility Lists

- Drug & Ward Fridges
- Nationally Contracted Products (NCP)
- PPE FF3 Masks
- Ward Furniture

Supplier

Filter

- Supply Chain Coordination... (16230)
- Stryker UK Ltd (11104)
- Johnson & Johnson Medic... (9508)

Search in current list




Description, Supplier & Manufacturer Part Number, Customer item number, GTIN, HIB...

Advanced Search Clear View

Tea Supplies

Add List To Cart Delete List Print

Items per page: 10 1 - 6 of 6

ITEM	PRICE	PACKAGING	QTY
 <p>Decaf coffee Instant Smooth Freeze Dried Granules in a tin 500g ★</p> <p>Supplier: Supply Chain Coordin... Supplier PN: ACD596 Mfr: JACOBS DOUWE EG... Mfr PN: 4032079 Customer Item #:</p> <p>In 1 List(s) Tea Supplies</p>	£	EACH 1	1
 <p>Decaf tea bags for Caterers 440s ★</p> <p>Supplier: Supply Chain Coordin... Supplier PN: ACT85004 Mfr: TATA CONSUMER PR... Mfr PN: 14000000013346 Customer Item #:</p> <p>In 1 List(s) Tea Supplies</p>	£	EACH 1	1
 <p>Biscuit Mini Packs Sweet assorted 3 biscuit minipack ★</p> <p>Supplier: Supply Chain Coordin... Supplier PN: ... Mfr: ... Mfr PN: ... Customer Item #:</p> <p>In 1 List(s)</p>	£	CASE 100 / 100	1

Add to Cart

Add to Cart

Right product, right place, right time, right patient



- One solution
- Standard processes
- Fully Integrated GS1 product data
- Automated transactions
- Stock visibility across ICS
- Platform for future roll out

Platform for transformation



GSI Compliant Data



Interoperable Technology



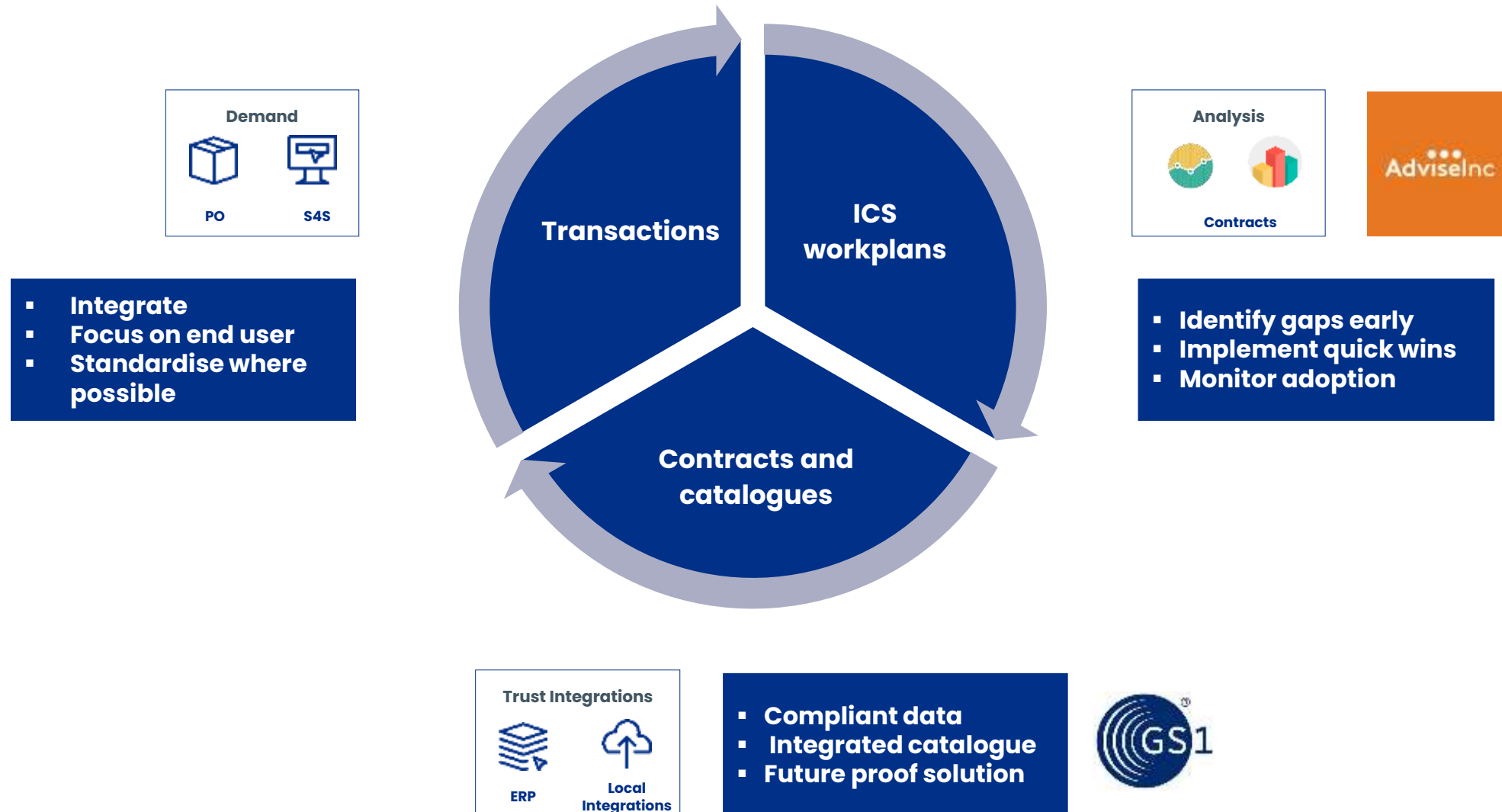
Processes



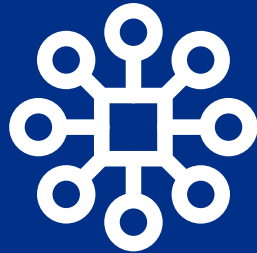
Analytics



Data driven workplans



Outcomes



ICS-wide visibility of stock levels, enabling better stock rotation



ICS-wide catalogue is improving product data accuracy, user experience, and enabling aggregation



More than 3000 users trained, enabling a smooth transition with less errors

Results



**95% of POs
automatically
dispatched**



**Requisition
time reduced
by 90%**



**>95% non-PO
spend**

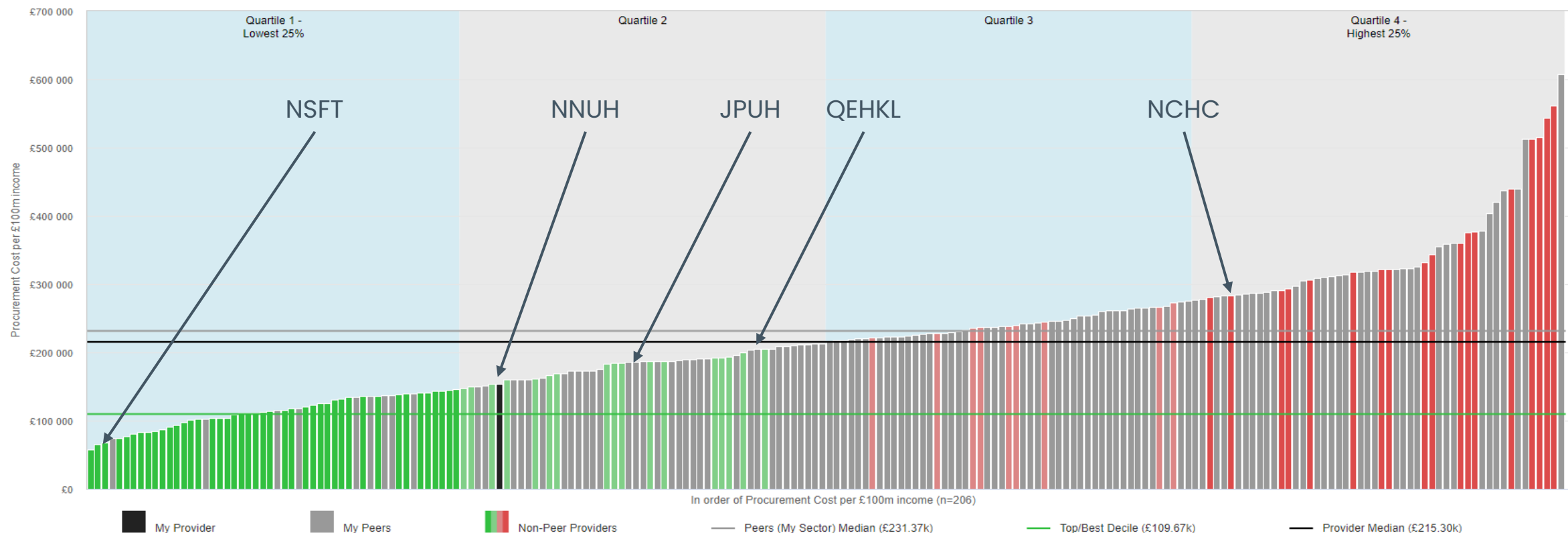


**£3.9m in cash
releasing
savings**

Cost of Procurement Benchmark

Procurement Cost per £100m income, National Distribution
Procurement function

Download



- NCHC/NSFT need to be averaged as NCHC provide NSFT service
- Grey columns are acute hospitals.
- NWPC differential to peer mean (acutes) c. £1m

Lessons learnt and Next Steps



- Data!!!
- IMS process changes
- Go live and roll out dates
- Don't expect perfection from day one

Q&A



Read the full case study



Request a brochure